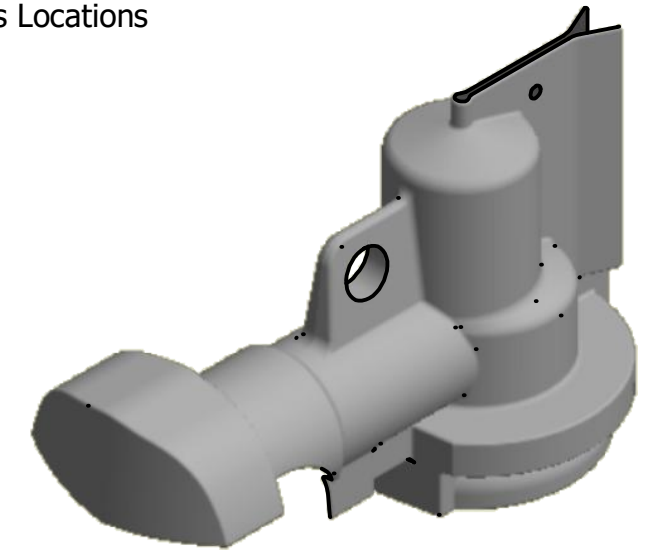
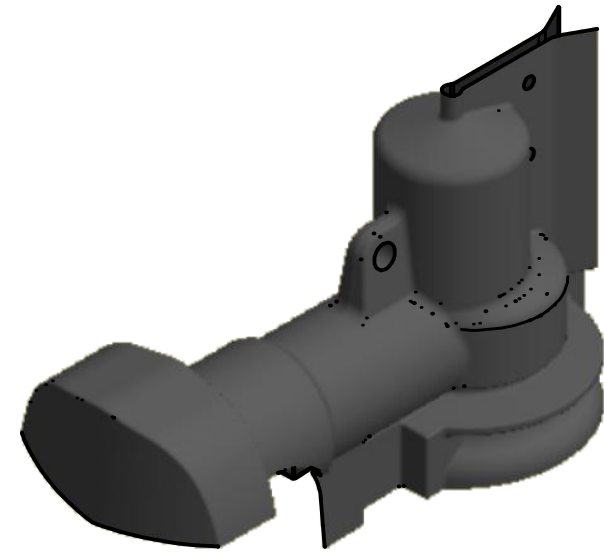
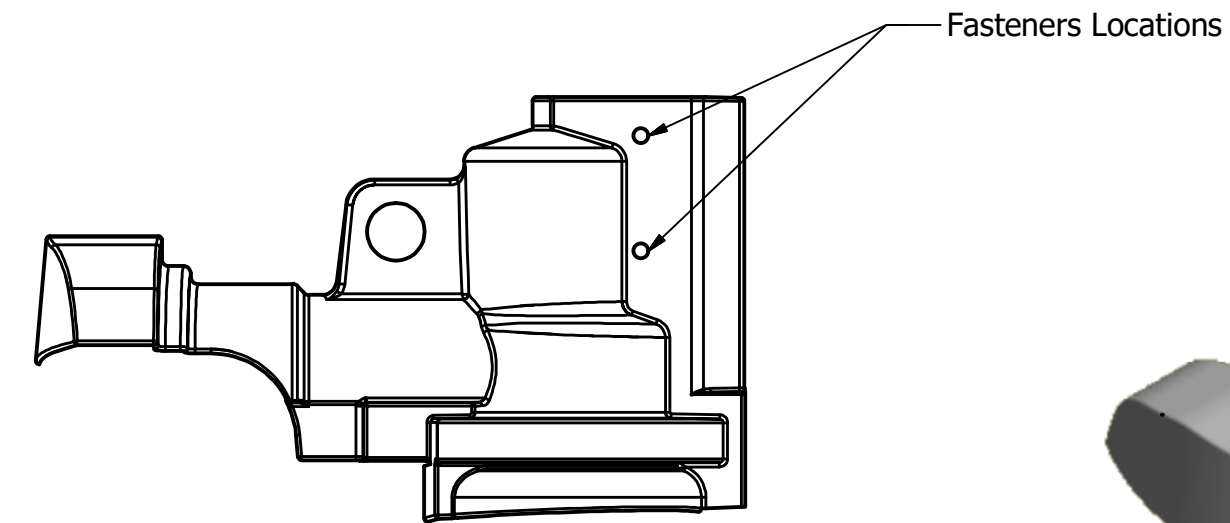
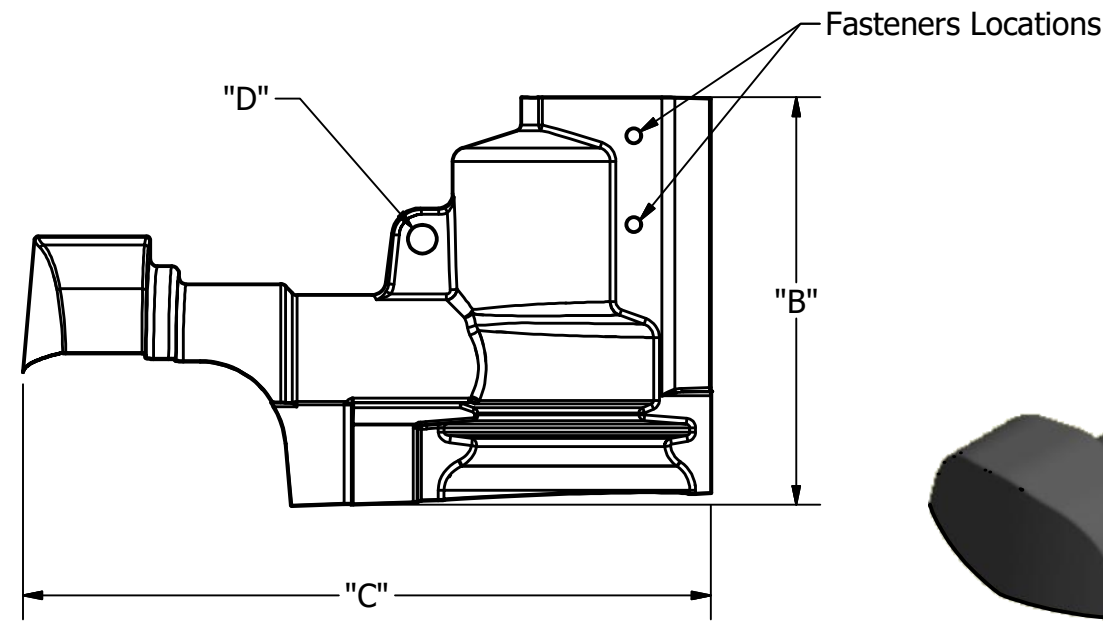
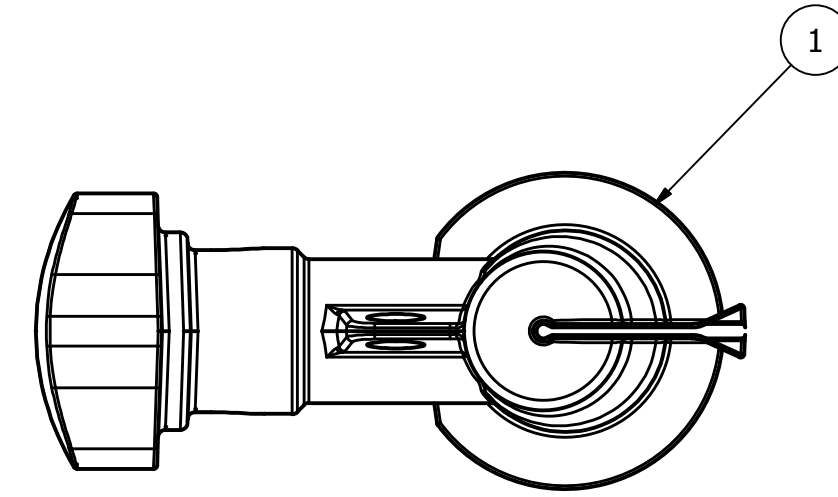
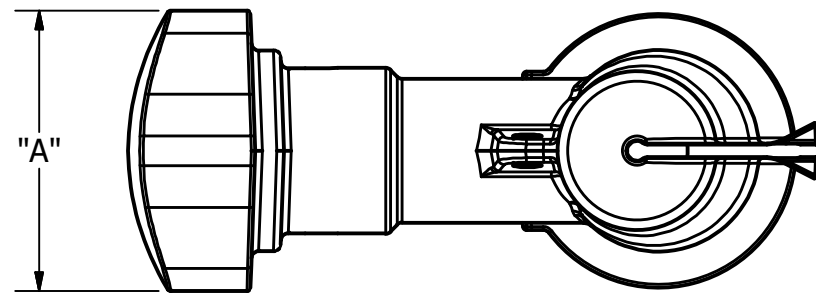


FIG NO.	CATALOG NO.	FITS CUTOUT SIZES (KV)	BILL RATING	HOT STICK (Y/N)	DIM "A"	DIM "B"	DIM "C"	DIM "D"	GROSS WEIGHT	STANDARD PACK
1	CC101	15,27	150	Y	5.00 [127.00]	7.00 [177.80]	11.00 [279.40]	0.50 [12.7]	1.310 [0.59]	6
2	CC170	15,27,36	170	Y	5.00 [127.00]	7.00 [177.80]	12.00 [304.80]	1.00 [25.4]	1.480 [0.67]	6

ITEM	DESCRIPTION	MATERIAL
1	CUTOUT COVER	PVC



**FIG 1**

**FIG 2**

**NOTES:**

- ALL DIMENSIONS FOR REFERENCE ONLY. DISTANCE IN. [MM], FORCE LBS. [kN], TORQUE IN. LBS. [N.m], & WEIGHT LBS. [KG].
- RATINGS:
  - NA
- CERTIFICATIONS, SPECIFICATIONS, & STANDARDS:
  - FASTNERS PRE-INSTALLED ON ONE SIDE ONLY
  - FASTNER MATERIAL IS UV STABILIZED
- SUFFIXES & VARIANT CONFIGURATION:
  - "SOC" - SOUTHERN COMPANY
  - "TEP" - TUCSON ELECT
  - "CLP" - WILDLIFE W/ HOLE
- FASTENER(S) SHOULD BE PRE-INSTALLED ON INDICATED SIDE OF PART
  - FASTENER(S) SHOULD ONLY BE INSTALLED THROUGH INDICATED SIDE OF FLANGE SUCH THAT THE WIRE SLIT WILL OPEN FREELY

78862	06/13/19	HD	RG	HPS.	
EC #	DATE	CHG BY	RESP ENG		
DESC OF DWG: REDRAWN IN INVENTOR NEW CC-TEMPLATE				CONFIDENTIAL: THIS DRAWING AND ITS CONTACTS ARE CONFIDENTIAL AND THE EXCLUSIVE PROPERTY OF HUBBELL POWER SYSTEMS. NO PUBLICATION, DISTRIBUTION OR COPIES MAY BE MADE WITHOUT THE WRITTEN CONSENT OF HUBBELL POWER SYSTEMS. HUBBELL POWER SYSTEMS UNPUBLISHED ALL RIGHTS RESERVED UNDER THE COPYRIGHT LAWS	TITLE <b>CC, CUTOUT COVER 15,27 &amp; 36 KV CUTOUTS</b>
REASON (S) FOR CHANGE: DISPOSITION OF MAT'L:					
DO NOT SCALE THIS DRAWING		DRN BY <b>BAN</b>	DATE <b>10-02-06</b>	SHEET <b>1 OF 1</b>	